

---

# LEADER-COACH PROGRAMME

CUSTOMISED IN-COMPANY TRAINING

Optimize your teams' performance and  
engagement within national and international  
organizations



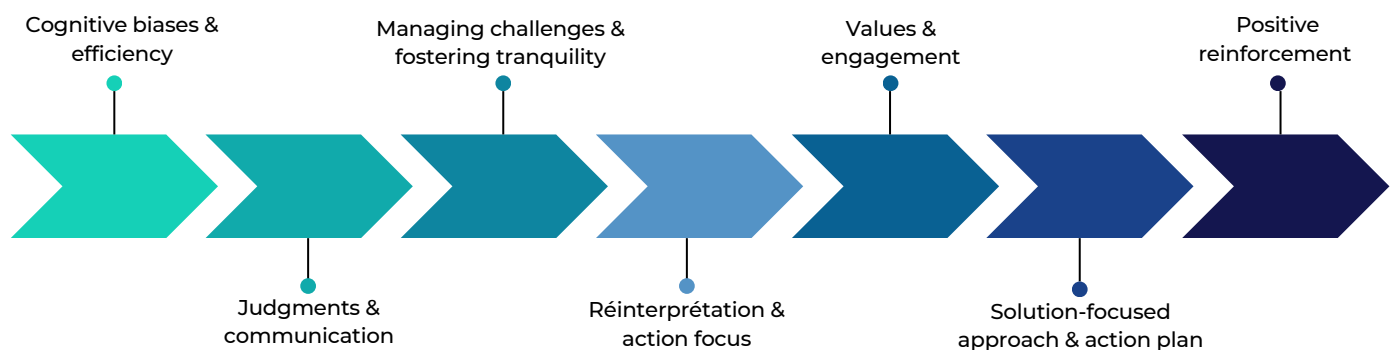
# Aims of the programme

- Identifying your company's specific managerial challenges and needs to define training objectives tailored to your context.
- Developing behavioral KPIs associated with these objectives, to measure progress and immediately benefit your organization.

## Examples of customised training objectives

- Adapting your management to different persons and generations.
- Acquiring a structured approach to strategic decision-making.
- Developing an assertive managerial posture.
- Learning to manage conflict and tension constructively.
- Equipping yourself with tools and methods for a culture of continuous improvement.
- Motivating and engaging your team in the company's values.
- Improving your stress management skills.
- Acquiring tools for adapting to change and embracing uncertainty.

## Nos outils soft-skills



## AI Enhanced Learning Support

Between sessions : support (24/7, in English/French) in implementing behavioural KPIs by our AI management managers- assistants.



**AI Assistant UPOLEPSIS**  
Factualizing and not judging the negative to rationalize.



**AI Assistant LOGOS**  
Freeing oneself from cognitive biases to serve one's professional efficiency.



**AI Assistant ORACLE**  
Co-creating an action plan.



**AI Assistant FOCUS**  
Intensifying what is effective and satisfying.



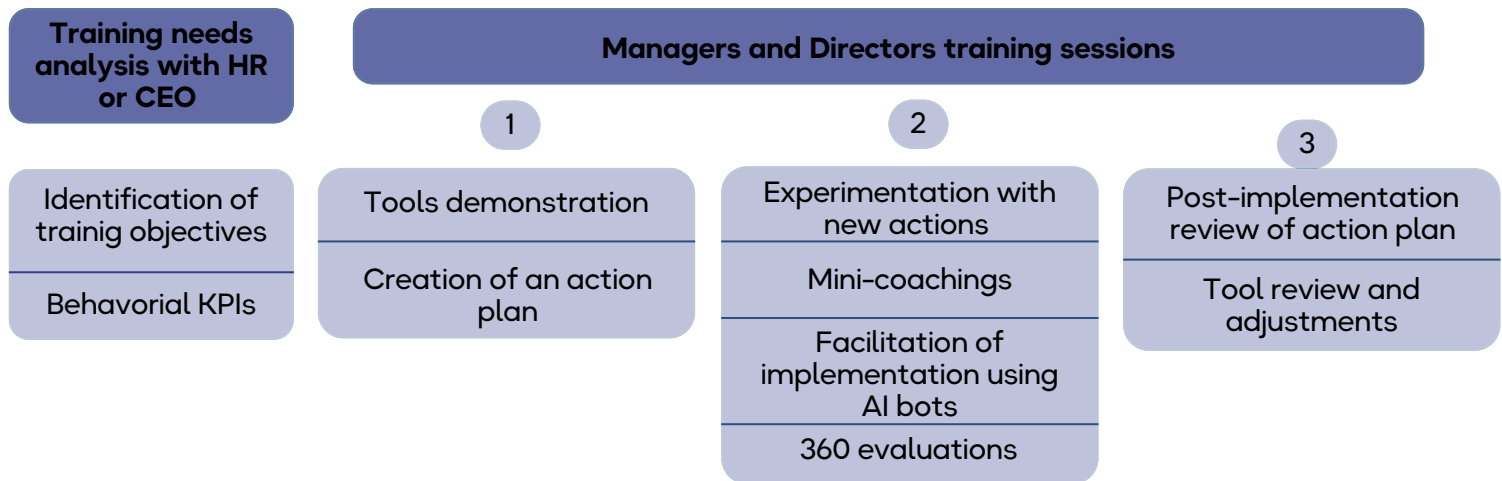
**AI Assistant ERGA**  
Identifying difficulties to act better.



**AI Assistant OPEN VIEW**  
Modifying perceptions and reactions to professional interactions..

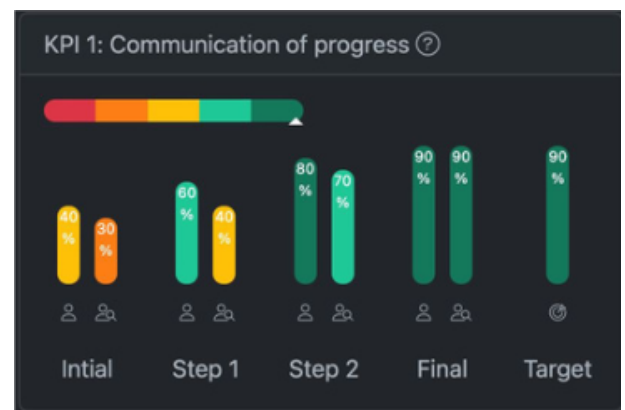
## Pedagogy

- Highly operational program focused on immediate application.

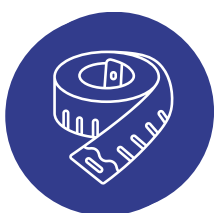


## Return on Investment

- Self + 360 evaluations on the implementation of managerial behavioral KPIs
- Professional efficiency test (efficiency, relationship quality, professional well-being)
- Final activity report and presentation of best practices in national and international contexts



## Leader-Coach Programme benefits



Highly customization



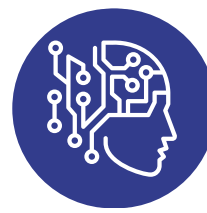
Flexibility-videoconf



Practice focus



Scientifically Validated Techniques



AI



University Paris Dauphine - PSL Certification

DURATION  
4-6 months

LOCATION  
On-site at your company, via videoconference, or in London.

TARGET AUDIENCE  
Managers et Directors  
Professionals for managerial development

LANGUAGE  
Trainings are taught in English or French

# An innovative co-branded programme

Dauphine London is part of Université Paris Dauphine – PSL, a prestigious university in Paris which specialises in economics, finance, management and social sciences. We are consistently ranked among the top 50 universities in the world by Times Higher Education, QS, CWUR and Shanghai rankings. By signing up for one of our programmes, you are joining one of the most reputable Higher Education Institutions in the world.

Cabinet Chrysippe-R&D, a research and development organization specializing in applied psychology for management, coaching, and managerial artificial intelligence, delivers evidence-based coaching and training, leveraging innovative technologies and practical tools.

Leader-Coach programme offers their participants the opportunity to acquire solid management techniques and inspiring leadership skills to develop the engagement and performance of their employees in both national and international contexts.

FOR FURTHER INFORMATION :

[dauphinelondon@dauphine.psl.eu](mailto:dauphinelondon@dauphine.psl.eu)

[london.dauphine.psl.eu/executive-education](https://london.dauphine.psl.eu/executive-education)